

# OUR LADY OF THE SNOWS PARISH

## UPDATE

A NEWSLETTER ESPECIALLY FOR ALL  
OUR PARISHIONERS

### Capital campaign a great success

This summer's capital campaign, "Uniting in Faith, Building One Family," has now reached \$646,863 pledged for the next three years. The campaign's aim is to raise funds needed to start phase one of the new parish complex on Clifford Avenue near County Road A-13.

With the pledge total exceeding \$500,000, the parish will also receive an outright gift of \$250,000 from the diocesan new parishes fund. We are most grateful to Bishop Weigand for this extraordinary contribution.

The first phase of the project involves constructing an open-air pavilion that will provide the foundation and frame-work for the new church. This will require grading the new site, building access roads and adequate parking. Phase one also calls for finding suitable housing in Chester which will serve as an interim rectory until the rectory can be built at the peninsula property. Among the probable options being studied, is the installation of a modular home on the land adjacent to Christ the King Church. If there are sufficient funds, adding temporary, modular meeting and social space at Chester will also be explored.



Fr. Larry Beck, center, gathers at a celebration dinner with capital campaign volunteers at the home of Mike and Angle Angelis on October 3.

### Thank you from our priests

We wish to thank our amazing parishioners for their outpouring of support, prayer and generosity during our summer campaign. "United in Faith, Building One Family" is truly what this effort is all about. We want our parish to come together, united in Christ, so our ministries and community can flourish for generations to come.

We have also seen an additional blessing from our campaign by it providing an opportunity for parishioners to get to know one another better and make new friends.

In all, more than 65 volunteers worked on the campaign and more than 140 households made contributions toward its success. We hope families who have not yet made an offering consider giving a contribution soon. Please help ensure we will have adequate funds to go forward with all the elements of first phase of the project.

Again, from the bottom of our hearts, thank you and may God bless you for your support and generosity. We hope and pray you and your families were blessed with a wonderful Thanksgiving.

Fr. Larry and Fr. Bernardin



BUILDING ONE FAMILY

## What's next?

An update from Fr. Larry Beck

In October Fr. Larry submitted to the bishop a comprehensive proposal for phase one of the building project. It included preliminary cost estimates from five construction firms located in Redding, the Almanor Basin and Susanville. Since that time, a sixth estimate has been received from a Yuba City firm. The proposal also included the conceptual sketches of the Clifford Avenue site plan and open-air pavilion, as well as costs and drawings of a possible modular home which could serve as rectory at our Chester property. By the end of the year, the proposal will be reviewed by the bishop, diocesan finance council, and building committee.

The building committee is meeting monthly to study the details of the plan and work through the many details of the project's implementation. We fully expect to move forward next summer with both the relocation of the priest to Chester and the open-air pavilion.

I am especially grateful to the many talented parishioners who have stepped forward to lend their development and building expertise to our committee. As in the past, we will continue to announce meetings in advance and encourage all interested parishioners to attend.

If you have any questions, please do not hesitate to contact me at (530) 283-0890.

Fr. Larry Beck

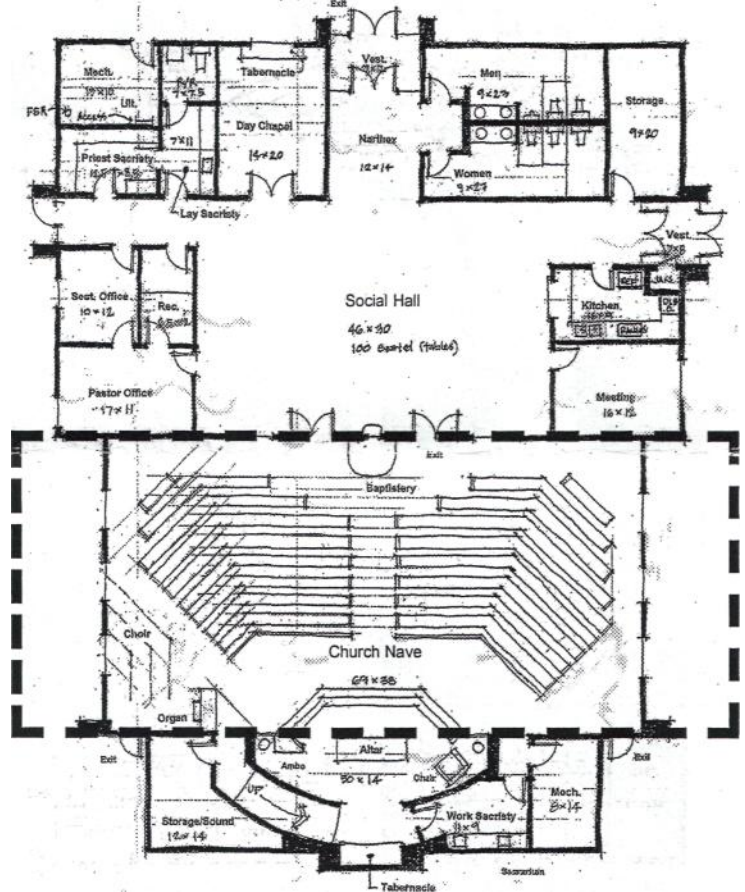
### **Making a gift, Honoring your pledge**

If you have not yet made a gift to our three-year campaign, you can request a pledge card from the parish office or simply write a letter giving the details of your pledge. Payments can be made annually, monthly, or in whatever time period you prefer. After your pledge card or letter is received, you will soon receive an acknowledgment letter.

Also, special, blue-colored campaign offering envelopes are available near the front doors of our churches. These, too, can be used to make a pledge, a one-time gift, or for payment of an existing pledge. Please take as many envelopes as you need and make out checks to "OLS Capital Campaign." Give us a call if you would like envelopes mailed to you. May God bless you for your generosity to our parish.

## Plan View of Future Church and Multi-purpose Parish Center

Pictured above, the conceptual floor plan for the future church. Please note all architectural plans at this point are currently being reviewed by the bishop and various diocesan committees.



The open-air pavilion will be this — ^ portion of our future church.

### *Key features of the complete building project*

- Consolidated facilities located relatively central to Catholic families in the Almanor Basin
- Reduction of costs associated with maintaining multiple, aging buildings
- Energy-efficient church with seating for 250 people and additional overflow seating for 150 people
- Adequate, paved off-street parking
- Attached multi-purpose social hall to enhance parish community life and ministries
- Adjacent kitchen, offices and meeting room space
- Attached weekday-Mass and prayer chapel
- Covered, level church entry
- Separate, private rectory which accommodates resident and visiting priests
- Site plan provides ample space for future expansion for generations to come

