



## OUR LADY OF THE SNOWS PARISH

# UPDATE

A NEWSLETTER ESPECIALLY FOR ALL  
OUR PARISHIONERS

### Church Dedication Postponed until Oct. 10

Despite our best efforts, we regret to announce the postponement of our liturgies and social events marking both the closing of our churches in Westwood and Chester and the dedication of the new church in Lake Almanor. The project's general contractor, Hilbers, Inc., confirmed on Aug. 11, that several key elements will not be completed by the Aug. 29 Dedication Mass with Bishop Soto. The Mass is now scheduled for Oct. 10, at 9:30 a.m.

While not unexpected, the news comes as a disappointment to our many dedicated parishioners, including those who have worked so hard on the building and unification committees. However, we will place this in God's hands and press on with new plans for the Oct. 10 dedication, as well as the closing Masses and social events for the two churches. The bishop has granted permission for us to use the new church prior to the dedication Mass, so we will close the Chester and Westwood churches soon after construction is completed and a public occupancy permit is issued. Hilbers now estimates completion by Sept. 24.

Please continue to keep our project in your daily prayers and, together, let us pray that, as with all things, God's will be done. We again give thanks to God for our more than 170 families and donors who generously have given of their material blessings to make our dream soon a reality.

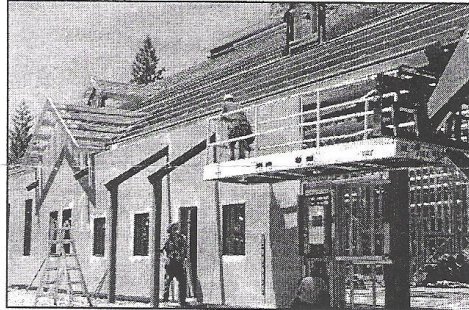
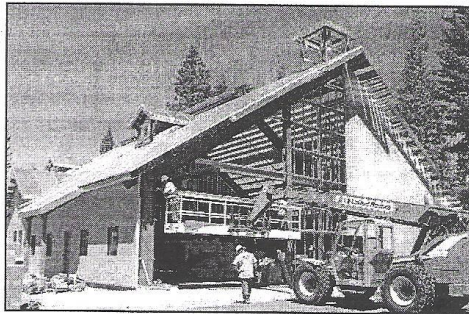


Photo shows progress as of July 1. Workers had just begun installing the metal siding.



Except for the front large-equipment opening, the siding and roof insulation were nearing completion by July 26.

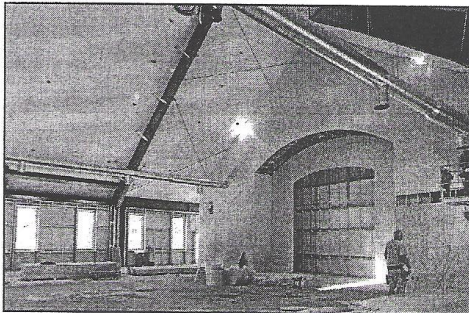
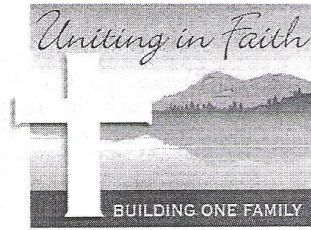


Photo taken August 5 shows progress of church and sanctuary as a worker installs wiring for the new sound system.



❄️ **A Note from Fr. Larry:**

**Construction Challenges Result in Dedication Delay**

I wish to share with you some of the construction challenges we have faced over the summer months which have resulted, in part, in the delay of the dedication.

At least two weeks of construction progress were lost early in the summer as a result of an error made on the sizing of the openings needed to accommodate the stained glass windows. Since this had to be corrected before the siding and the roof were installed, the steel erection company had to withdraw from the site to honor another job commitment. Once corrected, the workers returned to the site and work has progressed since then, except for a problem with roof installation, which is now resolved.

Meanwhile other problems surfaced concerning inadequate water pressure, the requirements of and timing of the PG&E hook-up for electricity and the county building department's inspections. Of special mention, the insufficient water pressure would compromise the operation of the fire suppression system, so several weeks of discussion, including retesting and redesign of system, ensued. A new fire suppression system design had to be submitted to the county building department for their approval.

While not affecting the construction completion date, the county planning department now requires we pave the upper parking lot, which we thought could be postponed until our second capital campaign in forthcoming years. After much discussion we have had to exceed our budget by another approximately \$30,000 in order to fund the paving.

As with all construction projects, we have had to face and resolve many unexpected problems along the way. Please know I will do my best to bring about a timely completion to our new spiritual home. Please contact me if you have any questions.

❄️ **"Something old, something new, something borrowed, something blue"**

One parishioner likened our new church to a newly married couple's first apartment. They make it their home at first by bringing some of the possessions they have, some of what they may have been given and some by what they are able to afford. It's often a humble start; but, it's just a beginning. So it is with our new church. With this in mind, below are brief answers to frequently asked questions:

**What items are we using from our two churches?**

With consultation of both the building committee and more recently the unification committee, the following are some of the key items we are transferring from our two churches: altar, priest's chair, tabernacle, crucifix and stations of the cross (Chester); statues, baptismal font and ambo (Westwood). This does not mean other items will not be used in the future. For example, the stations of the cross from Westwood might be used once we have built a weekday Mass chapel. Other items might be used in the social hall.

**What about the pews?**

New pews are far beyond our financial means. Used pews have been explored and are the likely source of future seating once we can locate ones with the proper length and features. In the meantime, we have been given permission from the bishop to use folding chairs.

**Will it be air conditioned?**

No, this is also beyond our financial means. However, the building will be "A/C-ready" so that we can easily add it in the future.

**What are we going to do with our old facilities?**

The 13-year financial plan developed by the diocesan financial director requires our parish to raise funds by selling the balance of our existing properties. Once the real estate market has improved we will list them for sale. However, we will be open to speaking now with any interested parties.

**Will our parish have a new name?**

No, we will continue to use our current name; however, it will soon be listed as "Our Lady of the Snows Parish, Lake Almanor."

**What will the interior look like?**

It is important to remember this is not a finished facility. It's a work in progress. Many of the interior features we had originally planned (day chapel, meeting room, kitchen and office) had to be removed. These can be added when future funding is secured. In the meantime we will have sealed concrete floors throughout, except the church's center aisle and sanctuary. Ductwork and exposed roofing elements will be plainly visible. On the other hand, the presence of the stained glass windows and familiar items such as the statues transferred from our churches will help make it feel more like a sacred space dedicated to worship. Most importantly, we will soon, as the people of God as the living church of our Lord, gather in one place so we can, together, become people striving to be united in faith and building one family. Let us pray for God's blessing.

**OUR LADY OF THE SNOWS CATHOLIC PARISH**

Our Lady of the Snows Church, Westwood P.O. Box 905, Westwood, CA 96137  
 Christ the King Church, Chester [www.ourladyofsnowsparish.org](http://www.ourladyofsnowsparish.org)

**UPDATE - SUMMER 2010**

Rectory/Fr. Mario - 256-3344  
 Parish Administration/Fr. Larry & Sharon Greif - 283-0890